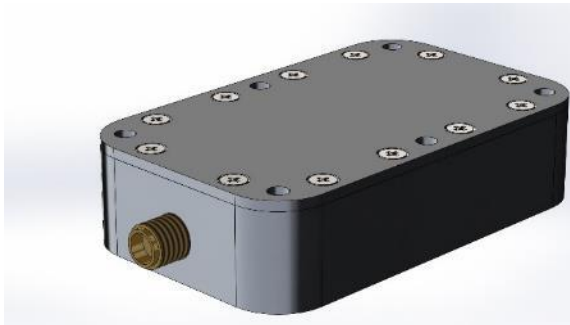


2-20GHz 180° Broadband Splitter module

LW24-797594

**PRODUCT DESCRIPTION**

The LW24-797594 180° hybrid splitter is Linwave's flagship model in its new range of broadband splitters. Linwave is now offering full release of this part which is available in a small physical size in comparison to other commercial off the shelf offerings.

Utilising its excellent design capabilities Linwave is pleased to offer this world class product with industry leading performance. The LW24-797594 provides two 180° balanced outputs and boasts excellent phase and amplitude matched outputs, all in a 61 x 36 x 17.5mm connectorized package.

A drop in version (LW12-700176) is also available for internal integration into a third party module. Drop in module size is 47 x 12 x 5mm.

PRODUCT FEATURES

- Wideband 2-20 GHz RF performance
- Small size, light weight
- Gross leak sealed
- Mechanically robust
- Wide operating temperature range
- Drop in version available

Linwave reserves the right to make changes, without notice, in the products, including circuits, standard cells, and/or software, described or contained herein in order to improve design and/or performance.

Data sheet Iss 01, dated 20/05/19 DS00-797594-01, Act. No. 4062

For price, delivery and to place orders please contact
Linwave Technology Ltd, Marlin Building, Sadler Road, Lincoln, LN6 3RS
Company Reg No 4478971 (England)
Phone: +44 (0) 1522 681811 Fax: +44 (0) 1522 681911
Email enquiries@linwave.co.uk Website www.linwave.co.uk
© 2019 Linwave Technology Ltd

ELECTRICAL SPECIFICATIONS

	Amplitude Balance	Phase Balance (180° nominal)	Isolation
0.5GHz to 2GHz	0 to -9dB	200 to 220°	12dB
2GHz to 18GHz	-2 to 2dB	170 to 210°	15dB
18GHz to 20GHz	-2 to 2dB	170 to 200°	17dB

ENVIRONMENTAL & MECHANICAL SPECIFICATIONS

Operating Temperature	-40°C to +85°C
Storage Temperature	-40°C to +85° C
Size (excluding connectors)	61 x 36 x 17.5 mm

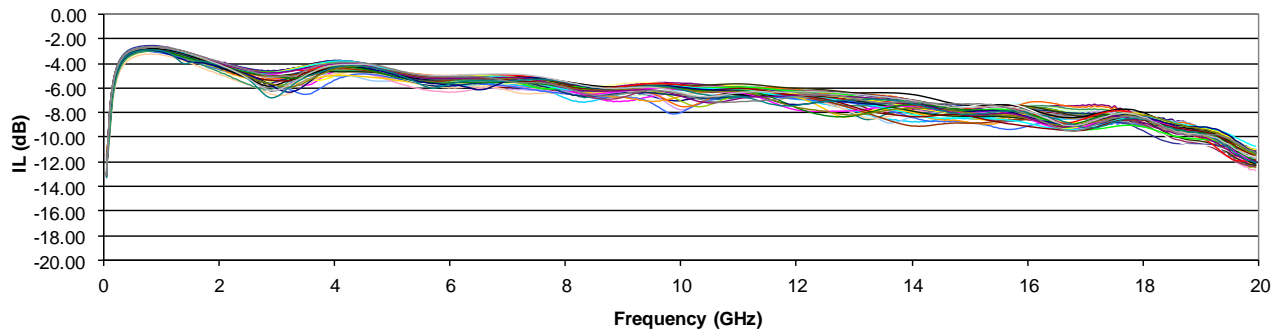
Linwave reserves the right to make changes, without notice, in the products, including circuits, standard cells, and/or software, described or contained herein in order to improve design and/or performance.

Data sheet Iss 01, dated 20/05/19 DS00-797594-01, Act. No. 4062

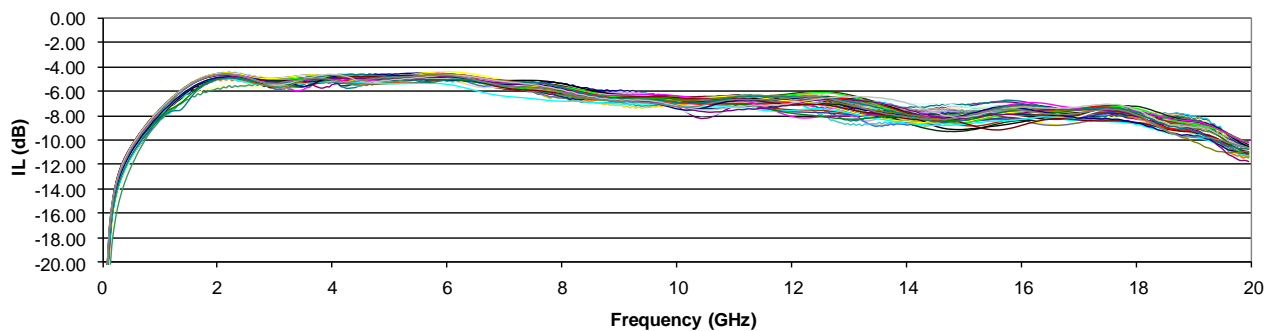
For price, delivery and to place orders please contact
Linwave Technology Ltd, Marlin Building, Sadler Road, Lincoln, LN6 3RS
Company Reg No 4478971 (England)
Phone:+44 (0) 1522 681811 Fax:+44 (0) 1522 681911
Email enquiries@linwave.co.uk Website www.linwave.co.uk
© 2019 Linwave Technology Ltd

PRODUCT TEST DATA – BASED ON 48 UNITS

Insertion Loss (Port1)



Insertion Loss (Port2)

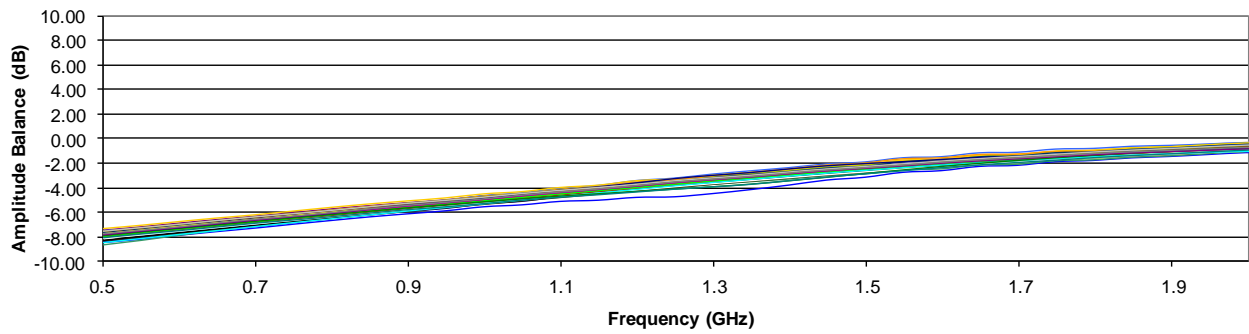


Linwave reserves the right to make changes, without notice, in the products, including circuits, standard cells, and/or software, described or contained herein in order to improve design and/or performance.

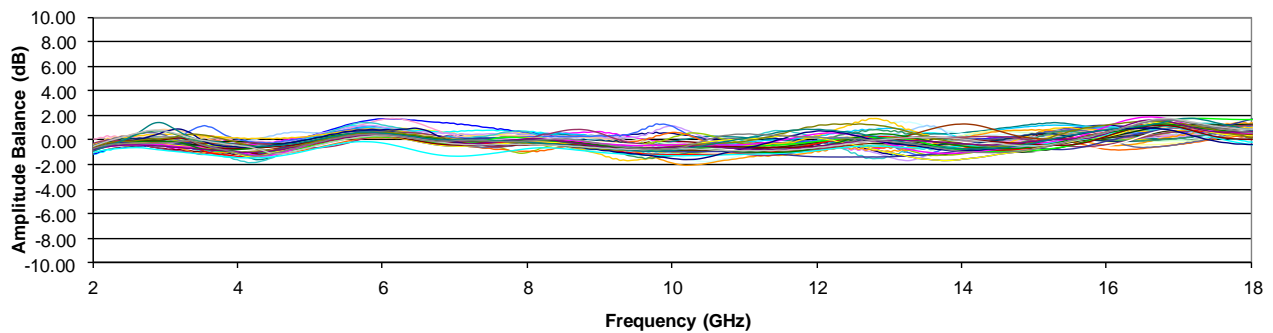
Data sheet Iss 01, dated 20/05/19 DS00-797594-01, Act. No. 4062

For price, delivery and to place orders please contact
 Linwave Technology Ltd, Marlin Building, Sadler Road, Lincoln, LN6 3RS
 Company Reg No 4478971 (England)
 Phone: +44 (0) 1522 681811 Fax: +44 (0) 1522 681911
 Email enquiries@linwave.co.uk Website www.linwave.co.uk
 © 2019 Linwave Technology Ltd

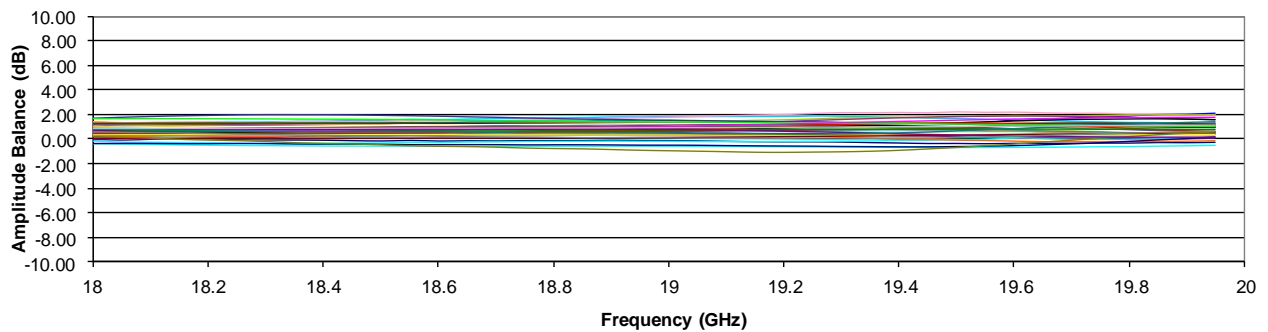
Amplitude Balance



Amplitude Balance



Amplitude Balance



Linwave reserves the right to make changes, without notice, in the products, including circuits, standard cells, and/or software, described or contained herein in order to improve design and/or performance.

Data sheet Iss 01, dated 20/05/19 DS00-797594-01, Act. No. 4062

For price, delivery and to place orders please contact
 Linwave Technology Ltd, Marlin Building, Sadler Road, Lincoln, LN6 3RS
 Company Reg No 4478971 (England)
 Phone: +44 (0) 1522 681811 Fax: +44 (0) 1522 681911
 Email enquiries@linwave.co.uk Website www.linwave.co.uk
 © 2019 Linwave Technology Ltd